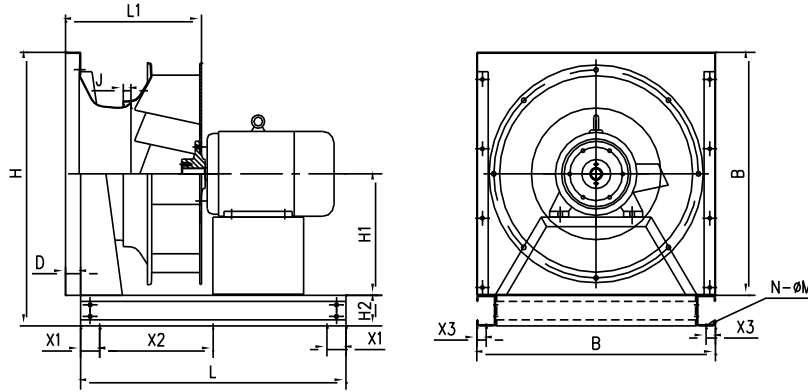
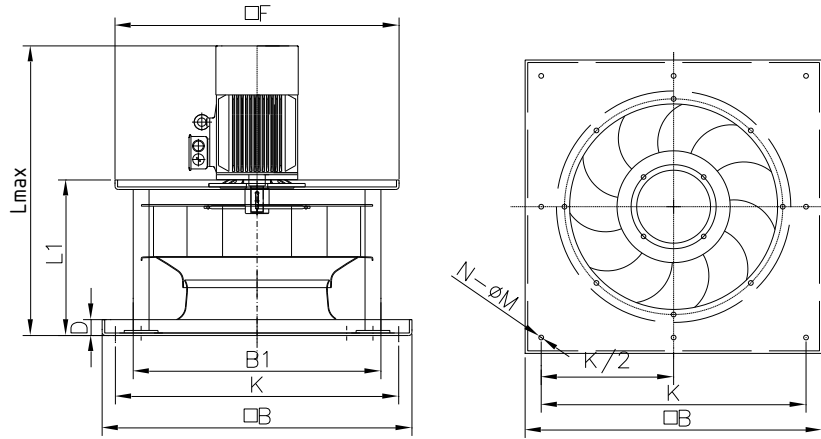


KAP250~1250

KAP FAN											
SIZE	尺寸 Dimension [mm]									叶轮重量 [kg]	风口重量 [kg]
	ϕA	ϕB	ϕC	ϕD	E	ϕF	G	K	S	Wheel weight	Cone weight
250	288	265	284	308	166	8	6	109	10	2	1
280	325	296	317	343	185	9	6	121	11	3	1
315	364	332	357	385	208	10	6	137	12	5	1
355	410	359	395	425	230			150	13	6.5	2
400	460	410	440	470	257	12	8	168	18	9	2
450	512	459	490	520	287			186	19	11.5	3
500	574	510	546	565	322	15	12	206	20	17	3
560	645	572	600	640	363			231	22	22.5	5
630	720	643	680	710	405	8	15	262	24	29	6
710	810	718	755	795	459			298	27	44	8
800	910	808	845	885	507	12	15	333	29	55	10
900	1000	909	945	985	571			378	32	78	12
1000	1120	1006	1050	1090	635	12	15	410	33	113	19
1120	1250	1137	1195	1235	704			455	35	161	24
1250	1400	1290	1325	1370	791	12	15	499	37	221	30

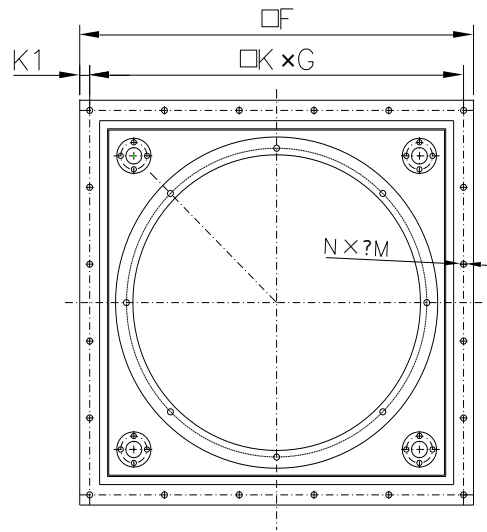
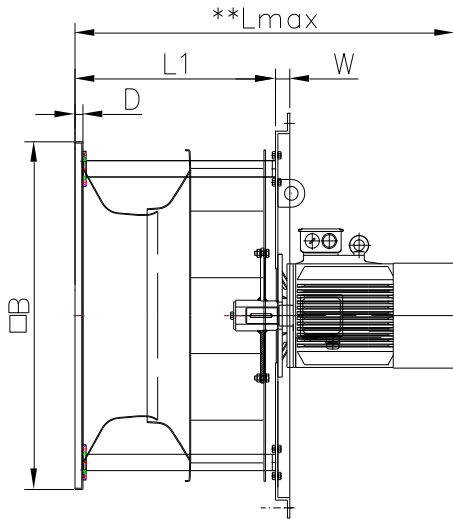


型号 Model	配套电机 Motor	尺寸 Dimensions [mm]													
		L	L1	D	H1	H2	H	J	B	X1	X2	X3	N	M	
			KAP												
250	71/80/90S/90L/100L	510	185	20	190	80	460	10	380	50		25			
280	71/80/90S/90L/100L	530	206	20	225	80	530	11	450	50		25			
315	80/90S/90L/100L	560	225	20	225	80	530	12	450	50		25	4	14	
	112M/132S	630													
355	80/90L/100L	580	246	20	300	80	680	13	600	50					25
	112M/132S	650													
400	90S/90L/100L/112M	620	273	20	300	80	680	18	600	50					25
	132S/160M	760													
450	90S/90L/100L/112M	660	303	20	300	80	680	19	600	50					25
	132S/160M	790													
500	90S/90L/100L/112M	700	338	20	380	80	840	20	760	50					25
	132S/132M/160M	830													
560	100L/112M/132S/132M	840	379	20	380	80	840	22	760	50	25	4	18		
	160M/160L/180M/200L	1040													
630	112M/132S/132M	880	421	20	380	80	840	24	760	50	25				
	160M/160L/180M/200L	1080													
710	132M/160M/160L	1030	478	25	480	80	1040	27	960	100	415	20	6	20	
	180M/180L/200L/225S	1230									515				
800	132M/160M/160L	1080	527	25	480	80	1040	29	960	100	440	20			
	180M/180L/200L/225M	1280									540				
900	160M/160L	1140	596	30	590	100	1280	32	1180	100	470	25			
	180L/200L/225S/225M	1340									570				
1000	160L/180L/200L	1330	660	30	590	100	1280	33	1180	100	565	25			
	225S/225M/250M/280S	1550									675				
1120	200L/225S/225M	1460	728	30	700	120	1520	35	1400	100	630	25			
	250M/280S/280M	1680									740				
1250	250M/280S/280M	1750	815	30	750	120	1620	37	1500	100	775	25			
	315S/315M	1950									875				



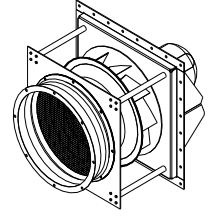
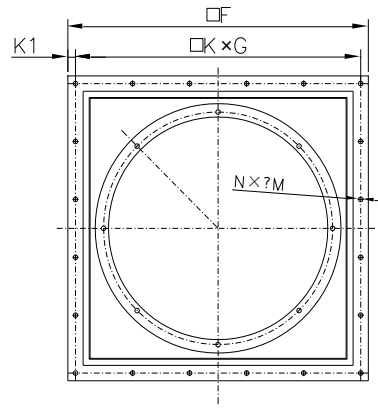
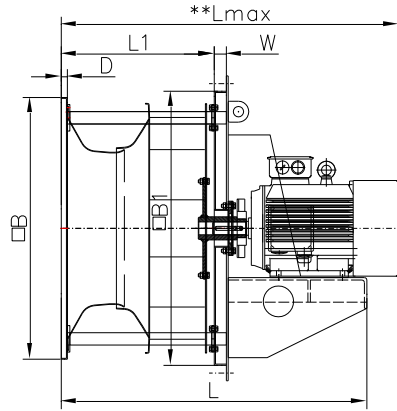
型号	配套电机	尺寸 Dimensions [mm]								
Model	Motor	Lmax	L1	D	F	B	B1	K	N	M
250	71/80/90S/90L/100L	540	210	20	370	470	370	420	4	14
280	71/80/90S/90L/100L	561	231	20	370	470	370	420		
315	80/90S/90L/100L	580	250	20	450	550	450	500		
355	80/90L/100L/112M	605	271	20	450	550	450	500		
400	90S/90L/100L/112M/132S	698	298	20	550	650	550	600		
450	90S/90L/100L/112M/132M	773	328	20	550	650	550	600		
500	90S/90L/100L/112M132S/132M	813	368	20	670	770	670	720		
560	100L/112M/132S/132M	824	409	20	670	790	670	730	8	18
	160M/160L	973								
630	112M/132S/132M	866	451	20	830	950	830	900		
	160M/160L	1015								
710	132M/160M/160L	1072	508	25	830	950	830	900		
	180M/180L	1116								
800	132M/160M/160L	1121	557	25	1000	1120	1000	1060		
	180M/180L	1165								
900	160M/160L	1192	628	25	1000	1120	1000	1060		
	180L/200L	1338								
1000	160M/160L	1254	690	25	1120	1240	1120	1180		
	180L/200L	1400								
1120	200L/225S/225M	1463	758	25	1360	1480	1360	1420		
1250	250M/280S/280M	1550	845	25	1400	1520	1400	1460		

** 不同品牌的电机长度不同“Lmax”不同, Different motor band the dimension 'Lmax' is different



型号	配套电机	尺寸 Dimensions [mm]										
Model	Motor	Lmax	L1	W	D	B	F	K1	K	G	N	M
250	71/80/90S/90L/100L	540	210	25	20	370	470	20	430	107.5	16	12
280	71/80/90S/90L/100L	561	231	25	20	370	470	20	430	107.5	16	12
315	80/90S/90L/100L	580	250	25	20	450	550	20	510	102	16	12
355	80/90L/100L/112M	605	271	25	20	450	550	20	510	102	20	14
400	90S/90L/100L/112M/132S	698	298	25	20	550	650	20	610	122	20	14
450	90S/90L/100L/112M/132M	773	328	25	20	550	650	20	610	122	20	14
500	90S/90L/100L/112M/132S/132M	813	368	30	20	670	770	20	730	146	20	14
560	100L/112M/132S/132M	824	409	30	20	670	790	25	740	148	20	16
	160M/160L	973	409									
630	112M/132S/132M	866	451	30	20	830	950	25	900	150	20	16
	160M/160L	1015	451									
710	132M/160M/160L	1072	508	30	25	830	950	25	900	150	24	18
	180M/180L	1116	508									
800	132M/160M/160L	1121	557	30	25	1000	1120	30	1060	212	24	18
	180M/180L	1165	557									
900	160M/160L	1192	628	30	25	1000	1120	30	1060	132.5	20	18
	180L/200L	1338	628									
1000	160M/160L	1254	690	30	25	1120	1240	30	1180	147.5	32	18
	180L/200L	1400	690									
1120	200L/225S/225M	1463	758	30	25	1360	1480	30	1420	177.5	32	18
1250	250M/280S/280M	1550	845	30	25	1400	1520	30	1460	182.5	32	18

** 不同品牌的电机长度不同 "Lmax" 不同, Different motor band the dimension 'Lmax' is different



型号	配套电机	尺寸 Dimensions [mm]												
Model	Motor	Lmax	L	L1	D	W	B	B1	F	K1	K	G	N	M
250	71/80/90S/90L/100L	564	547	210	20	25	370	390	470	20	430	107.5	16	12
280	71/80/90S/90L/100L	585	568	231	20	25	370	390	470	20	430	107.5	16	12
315	80/90S/90L/100L	604	587	250	20	25	450	470	550	20	510	102	16	12
	112M/132S	432	358											
355	80/90L/100L	625	608	271	20	25	450	470	550	20	510	102	20	14
	112M/132S	432	396											
400	90S/90L/100L/112M	656	643	298	20	25	550	570	650	20	610	122	20	14
	132S/160M	608	476											
450	90S/90L/100L/112M	686	673	328	20	25	550	570	650	20	610	122	20	14
	132S/160M	608	476											
500	90S/90L/100L/112M	1001	708	363	20	25	670	690	770	20	730	146	20	14
	132S/132M/160M	608	476											
560	100L/112M/132S/132M	886	835	409	20	30	670	690	790	25	740	148	20	16
	160M/160L/180M/200L	706	607											
630	112M/132S/132M	928	877	451	20	30	830	850	950	25	900	150	20	16
	160M/160L/180M/200L	706	607											
710	132M/160M/160L	1056	1058	508	25	30	830	850	950	25	900	150	24	18
	180M/180L/200L/225S	736	632											
800	132M/160M/160L	1105	1107	557	25	30	1000	1020	1120	30	1060	212	24	18
	180M/180L/200L/225SM	731	657											
900	160M/160L	1176	1178	628	25	30	1000	1020	1120	30	1060	132.5	20	18
	180L/200L/225SM	731	657											
1000	160M/160L	1238	1240	690	25	30	1120	1140	1240	30	1180	147.5	32	18
	180L/200L/225S/225M	731	657											
1120	200L/225S/225M	1489	1445	758	25	30	1360	1380	1480	30	1420	177.5	32	18
	250M/280S/280M	892	813											
1250	250M/280S/280M	1737	1688	845	25	30	1400	1420	1520	30	1460	182.5	32	18
	315S/315M	1041	1007											

** 不同品牌的电机长度不同“Lmax”不同, Different motor brand the dimension 'Lmax' is different