

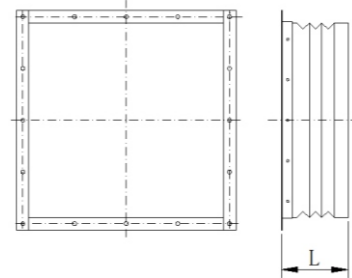
附件 Accessories

出风口软连接装置

出风口软连接是用聚酯/PVC织物材料制成，两侧配镀锌钢板制作的法兰。尺寸“L”为155mm的软连接适合于各种大小的风机。根据需要，可定制特殊的软连接。

Flexible outlet connection

The flexible connection for the outlet is manufactured with a polyester/PVC fabric and two matching flanges, made in galvanised steel sheet. The “L” dimension, valid for all fan sizes, is equal to 155mm. Special flexible connections can be manufactured on request.

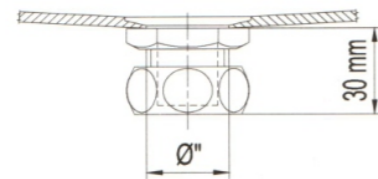


排水孔

通常设于风机的最低部位，以排除冷凝水，尺寸 ϕ'' 为1/2''。

Drain plug

Usually fitted at the lowest part of the fan to facilitate drain of condensation, $\phi'' = 1/2''$.



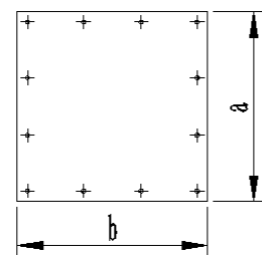
检修门

在风机的壳体上课开设检修门，它用钢板作成，并用快速松开的螺钉固定，用合成的密封垫防止漏风。检修门的位置必须在订单中说明。

Inspection door

Can be fitted to the fan casing and consists of a steel plate fixed by quick release screws. A synthetic gasket prevents leakage. Position of the inspection door must be clearly stated in the order.

	a	b
BNS/BAS 200 - 280	150	120
BNS/BAS 315 - 560	190	170
BNS/BAS 630 - 1000	240	220

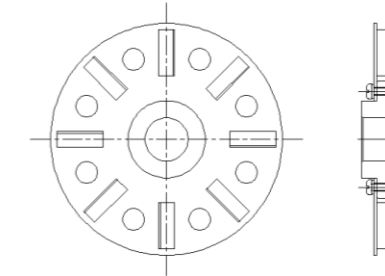


散热环

设于风机的电机轴头端，轴孔配合，以加快电机散热。

Ring Radiator

Set in the fan motor shaft head end assembled with the shaft hole in order to speed up the motor heat dissipation.

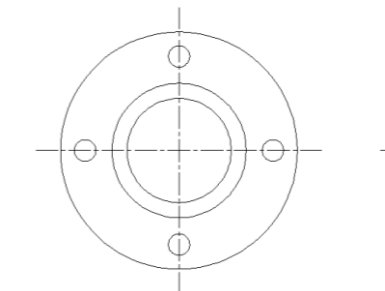


轴封

在电机轴穿过蜗壳侧板处加设轴封，提高风机的密封性。

Shaft seal

The shaft seal is added on the side plate of the motor shaft passing through the volute to improve the airtightness of the fan.



进风法兰和保护网

进风口分为L型和U型，均可加设保护网。

Air inlet flange and protective net

The air inlet flange is divided into L type and U type. Both of the two types can be set protective net.

