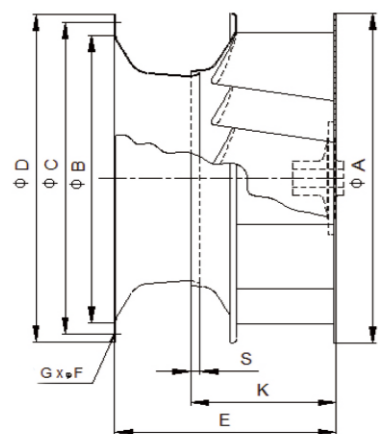
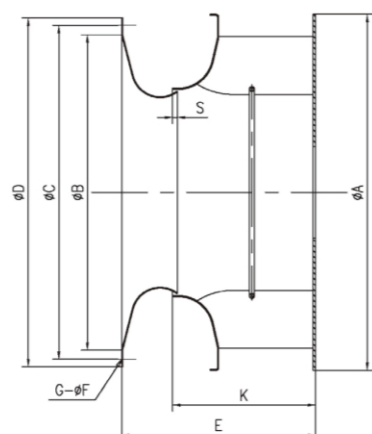


3.0 风机安装尺寸 3.0 Installation Dimension  
3.1 叶轮进风口尺寸 3.1 Wheel And Inlet Dimension



PAS250~1250



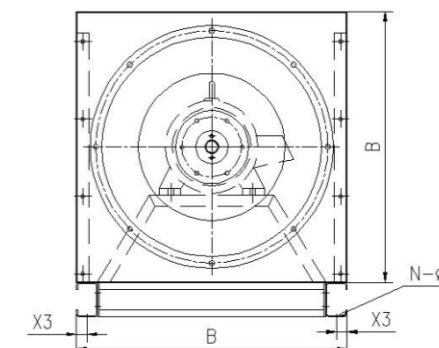
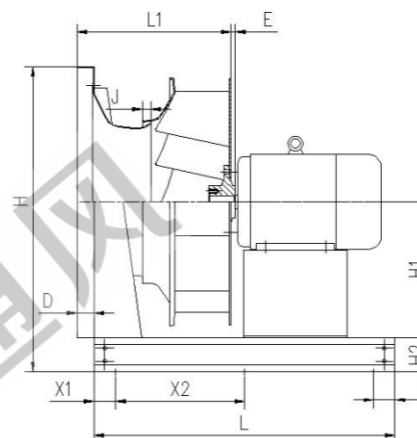
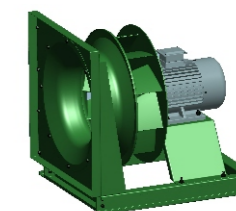
PNS250~1000

PAS FAN											
SIZE	尺寸 Dimension [mm]						叶轮重量 [kg]		风口重量 [kg]		
	ØA	ØB	ØC	ØD	E	ØF	G	K	S	Wheel weight	Cone weight
250	288	265	285	308	166	8	6	109	10	2	1
280	325	296	318	343	185	9		121	11	3	1
315	364	332	357	385	208	10	8	137	12	5	1
355	410	359	395	425	230			150	13	6.5	2
400	460	410	440	470	257	12	10	168	18	9	2
450	512	459	490	520	287			186	19	11.5	3
500	574	510	546	565	322	15	12	206	20	17	3
560	645	572	600	640	363			231	22	22.5	5
630	720	643	680	710	405	8	10	262	24	29	6
710	810	718	755	795	459			298	27	44	8
800	910	808	845	885	507	15	12	333	29	55	10
900	1000	909	945	985	571			378	32	78	12
1000	1120	1006	1050	1090	635	12	10	410	33	113	19
1120	1250	1137	1195	1235	704			455	35	161	24
1250	1400	1290	1325	1370	791	499	37	221	30		

PNS FAN											
SIZE	尺寸 Dimension [mm]						叶轮重量 [kg]		风口重量 [kg]		
	ØA	ØB	ØC	ØD	E	ØF	G	K	S	Wheel weight	Cone weight
250	286	258	280	300	158	10	8	115	5	3	0.7
280	328	294	321	340	179			131	5	4	0.9
315	367	328	356	380	200	12	10	142	5	5.3	1.2
355	413	370	397	425	224			161	6	7	1.5
400	464	418	456	480	248	15	12	179	7	9	1.9
450	518	462	505	530	278			203	8	13.5	2.3
500	582	514	554	585	309	8	10	226	8	20	2.8
560	650	576	629	660	350			254	9	24	3.5
630	730	646	700	730	393	15	12	284	10	36	4.3
710	820	728	778	810	440			318	12	51	7.4
800	914	808	866	905	491	12	10	356	14	65	9.4
900	1033	924	966	1006	552			401	16	100	11.8
1000	1142	1036	1074	1106	619	449	18	123	14.3		

PAS FAN	315	355	400	450	500	560	630
锥套型号	SM1200/1210	SM1600/1615	SM1600/1615	SM2000/2010	SM2000/2010	SM2500/2517	SM2500/2517
PAS FAN	710	800	900	1000	1120	1250	
锥套型号	SM30-1/3230	SM30-1/3230	SM30-2/3230	SM30-2/3230	SM30-2/3230	SM30-2/3230	

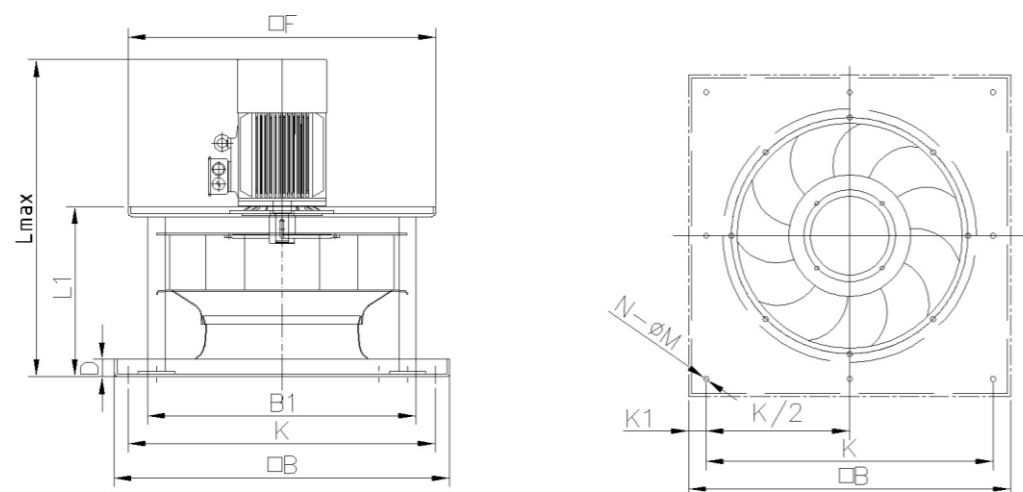
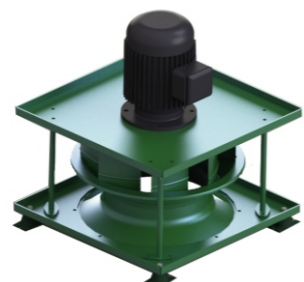
3.2 A4-电机直连传动尺寸 3.2 A4-Motor Direct Driving Dimension



型号 Model	配套电机 Motor	尺寸 Dimensions [mm]															
		L	L1		D	H1	H2	H	J		B	X1	X2	X3	E	N	M
			PAS	PNS					PAS	PNS							
250	71/80/90S/90L	410	182	176	20	190	80	460	10	5	380	50	25	10			
	100L	510															
280	71/80	430	201	196	20	225	80	530	11	5	450	50	25	10			
	90S/90L/100L	480															
315	80/90S/90L	500	224	216	20	225	80	530	12	5	450	50	25	10			
	100L/112M/132S	560															
355	80/90S/90L	500	246	240	20	300	80	680	13	6	600	50	25	10	4	14	
	100L/112M/132S	580															
400	90S/90L/100L/112M	580	273	264	20	300	80	680	18	7	600	50	25	12			
	132S/132M/160M	700															
450	90S/90L	550	303	294	20	300	80	680	19	8	600	50	25	12			
	100L/112M	660															
500	132S/132M/160M	790	338	325	20	380	80	840	20	8	760	50	20	12			
	90S/90L/100L/112M	700															
560	132S/132M/160M	830	379	366	20	380	80	840	22	9	760	50	20	11	4		
	100L/112M/132S/132M	840															
630	160M/160L/180M/200L	1040	421	409	20	380	80	840	24	10	760	50	20	11			
	112M/132S/132M	880															
710	132M/160M/160L	1030	480	461	25	480	80	1040	27	12	960	100	415	20	10		
	180M/180L/200L/225S	1230															
800	132M/160M/160L	1080	527	512	25	480	80	1040	29	14	960	100	440	20	10		
	180M/180L/200L/225M	1280															
900	160M/160L	1140	596	577	30	590	100	1280	32	16	1180	100	470	25	7		
	180L/200L/225S/225M	1340															
1000	160L/180L/200L/225S/225M	1330	660	644	30	590	100	1280	33	18	1180	100	565	25	25		
	250M/280S	1550															
1120	200L/225S/225M	1460	728	-	30	700	120	1520	35	20	1400	100	630	25	25		
	250M/280S/280M	1680															
1250	250M/280S/280M	1750	815	-	30	750	120	1620	37	22	1500	100	775	25	0		
	315S/315M	1950															

\*\* 不同品牌的电机长度不同 "Lmax" 不同 Different motor band the dimension 'Lmax' is different

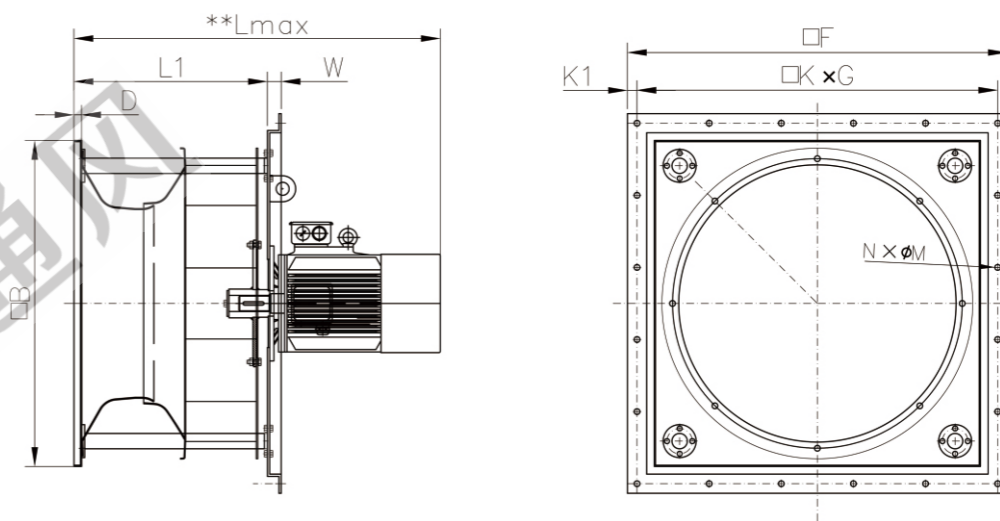
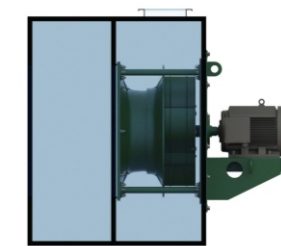
3.3 V5立式结构  
3.3 V5 Vertical Type



型号 Model	配套电机 Motor	尺寸 Dimensions [mm]											
		Lmax		L1		D	F	B	B1	K1	K	N	M
		PAS	PNS	PAS	PNS								
250	71/80/90S/90L/100L	540	532	210	202	20	396	410	370	50	360	4	14
280	71/80/90S/90L/100L	569	564	239	234	20	438	450	403	50	400		
315	80/90S/90L/100L	580	572	250	242	20	487	500	442	50	450		
355	80/90L/100L/112M	608	602	274	268	20	537	550	492	50	500		
400	90S/90L/100L/112M/132S	714	705	314	295	25	601	620	556	50	570		
450	90S/90L/100L/112M/132M	789	780	344	335	25	651	670	606	50	620		
500	90S/90L/100L/112M/132S/132M	813	800	379	366	25	730	750	682	50	700		
560	100L/112M/132S/132M	824	811	409	396	25	770	790	670	60	730		
	160M/160L	973	960										
630	112M/132S/132M	866	854	451	439	25	830	950	830	60	900		
	160M/160L	1015	1003										
710	132M/160M/160L	1072	1053	508	489	25	830	950	830	60	900		
	180M/180L	1116	1097										
800	132M/160M/160L	1121	1105	557	541	25	1000	1120	1000	60	1060		
	180M/180L	1165	1149										
900	160M/160L	1192	1173	628	609	25	1000	1120	1000	60	1060		
	180L/200L	1338	1319										
1000	160M/160L	1254	1238	690	674	25	1120	1240	1120	60	1180		
	180L/200L	1400	1384										
1120	200L/225S/225M	1463	-	758	-	25	1360	1480	1360	60	1420	8	18
1250	250M/280S/280M	1550	-	845	-	25	1400	1520	1400	60	1460		

\*\* 不同品牌的电机长度不同 “Lmax” 不同 Different motor band the dimension 'Lmax' is different

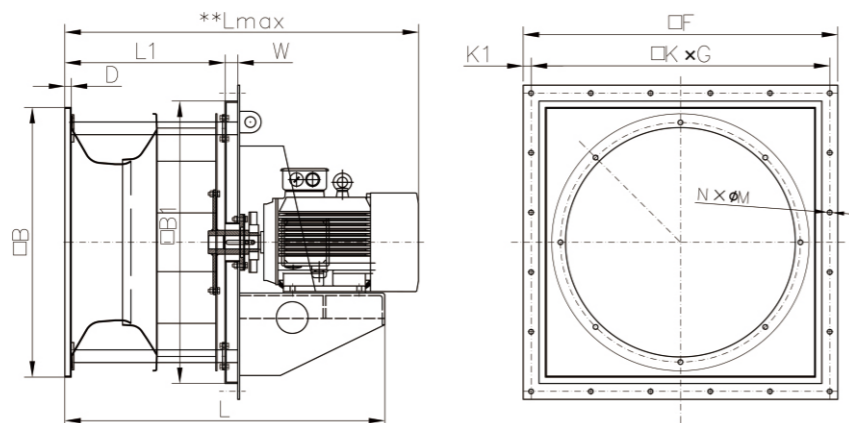
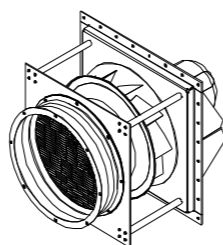
3.4 PL插入式结构 电机B5安装  
3.4 PL-Plug Type  
Motor B5 Installation



型号 Model	配套电机 Motor	尺寸 Dimensions [mm]												
		Lmax		L1		W	D	B	F	K1	K	G	N	M
		PAS	PNS	PAS	PNS									
250	71/80/90S/90L/100L	540	536	210	206	25	20	370	470	20	430	107.5	16	12
280	71/80/90S/90L/100L	561	560	231	230	25	20	370	470	20	430	107.5	16	12
315	80/90S/90L/100L	580	577	250	247	25	20	450	550	20	510	102	16	12
355	80/90L/100L/112M	605	604	271	270	25	20	450	550	20	510	102	20	14
400	90S/90L/100L/112M/132S	698	695	298	295	25	20	550	650	20	610	122	20	14
450	90S/90L/100L/112M/132M	773	771	328	326	25	20	550	650	20	610	122	20	14
500	90S/90L/100L/112M/132S/132M	813	808	368	363	30	20	670	770	20	730	146	20	14
560	100L/112M/132S/132M	824	820	409	405	30	20	670	790	25	740	148	20	16
	160M/160L	973	969											
630	112M/132S/132M	866	864	451	449	30	20	830	950	25	900	150	20	16
	160M/160L	1015	1013											
710	132M/160M/160L	1072	1064	508	500	30	25	830	950	25	900	150	24	18
	180M/180L	1116	1108											
800	132M/160M/160L	1121	1117	557	553	30	25	1000	1120	30	1060	212	24	18
	180M/180L	1165	1161											
900	160M/160L	1192	1187	628	623	30	25	1000	1120	30	1060	132.5	20	18
	180L/200L	1338	1333											
1000	160M/160L	1254	1253	690	689	30	25	1120	1240	30	1180	147.5	32	18
	180L/200L	1400	1399											
1120	200L/225S/225M	1463	-	758	-	30	25	1360	1480	30	1420	177.5	32	18
1250	250M/280S/280M	1550	-	845	-	30	25	1400	1520	30	1460	182.5	32	18

\*\* 不同品牌的电机长度不同 “Lmax” 不同 Different motor band the dimension 'Lmax' is different

### 3.5 PL高温结构 电机B3安装 3.5 PL High-temperature Type Motor B3 Installation

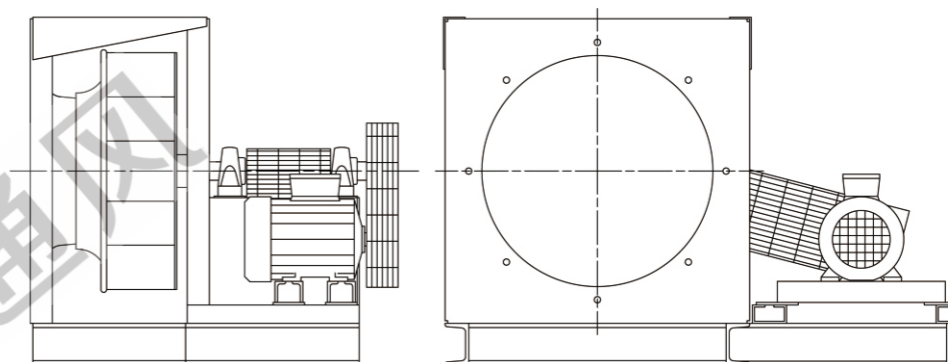


型号 Model	配套电机 Motor	尺寸 Dimensions [mm]														
		Lmax		L	L1		D	W	B	B1	F	K1	K	G	N	M
		PAS	PNS		PAS	PNS										
250	71/80/90S/90L/100L	564	560	547	210	206	20	25	370	390	470	20	4	107.5	16	12
280	71/80/90S/90L/100L	585	584	568	231	230	20	25	370	390	470	20	4	107.5	16	12
315	80/90S/90L/100L	604	601	587	250	247	20	25	450	470	550	20	5	102	16	12
	112M/132S	432	429	358												
355	80/90L/100L	625	624	608	271	270	20	25	450	470	550	20	5	102	20	14
	112M/132S	432	431	396												
400	90S/90L/100L/112M	656	653	643	298	295	20	25	550	570	650	20	5	122	20	14
	132S/160M	608	605	476												
450	90S/90L/100L/112M	686	684	673	328	326	20	25	550	570	650	20	5	122	20	14
	132S/160M	608	606	476												
500	90S/90L/100L/112M	1006	1001	713	368	363	20	25	670	690	770	20	5	146	20	14
	132S/132M/160M	608	603	476												
560	100L/112M/132S/132M	886	882	835	409	405	20	30	670	690	790	25	5	148	20	16
	160M/160L/180M/200L	706	702	607												
630	112M/132S/132M	928	926	877	451	449	20	30	830	850	950	25	6	150	20	16
	160M/160L/180M/200L	706	704	607												
710	132M/160M/160L	1056	1048	1058	508	500	25	30	830	850	950	25	6	150	24	18
	180M/180L/200L/225S	736	728	632												
800	132M/160M/160L	1105	1101	1107	557	553	25	30	1000	1020	1120	30	5	212	24	18
	180M/180L/200L/225SM	731	727	657												
900	160M/160L	1176	1171	1178	628	623	25	30	1000	1020	1120	30	8	132.5	20	18
	180L/200L/225SM	731	726	657												
1000	160M/160L	1238	1237	1240	690	689	25	30	1120	1140	1240	30	8	147.5	32	18
	180L/200L/225S/225M	731	730	657												
1120	200L/225S/225M	1489	-	1445	758	-	25	30	1360	1380	1480	30	8	177.5	32	18
	250M/280S/280M	892	-	813												
1250	250M/280S/280M	1737	-	1688	845	-	25	30	1400	1420	1520	30	8	182.5	32	18
	315S/315M	1041	-	1007												

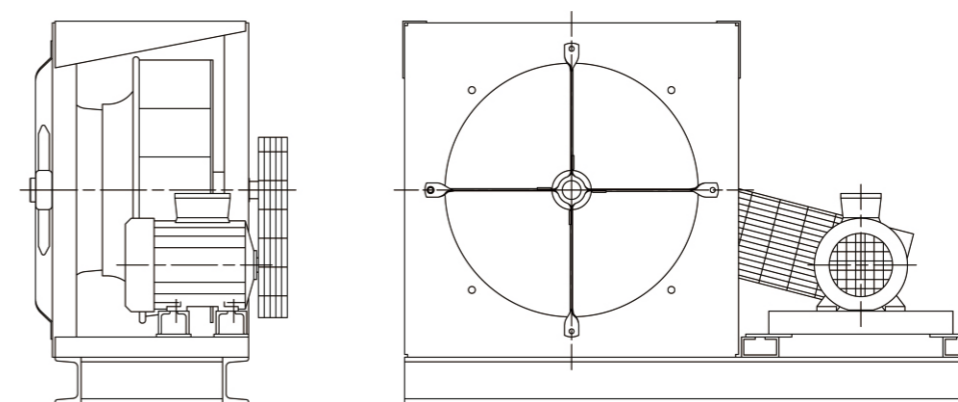
\*\* 不同品牌的电机长度不同 “Lmax” 不同 Different motor band the dimension 'Lmax' is different

### 3.6 其他安装形式有 3.6 The Other Installation Type

S11 - 悬臂支撑式皮带传动;  
S11- Cantilever supporting belt-drive



S12 - 两端支撑式皮带传动  
S12-Both ends supporting belt-drive



其他定制结构 Other customize Setting

